



Weatherfold Window 35

Non Mortice Hinges

Weatherfold Window 35 is a stainless steel based, top hung folding system specifically designed for exterior windows as well as internal reception desks or kiosks.

Capable of supporting window panels of equal width up to 35kg, this innovative hardware system is available in 2 colour options to blend seamlessly with any décor.

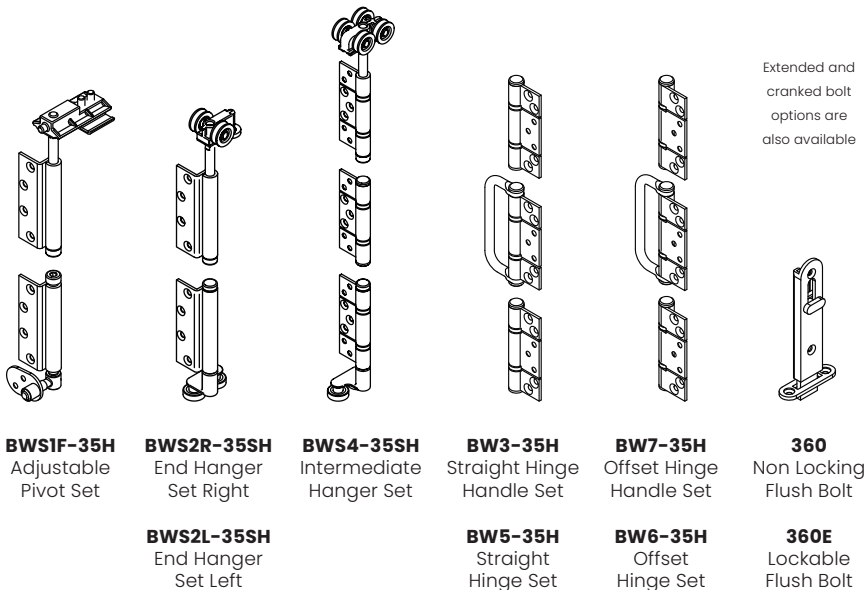
Crafted from high-grade 304 stainless steel, the non-mortice hinges offers exceptional strength, corrosion resistance, and a sleek aesthetic.

Top hangers comprise sealed bearings for durability, grooved nylon wheels for a smooth, quiet operation, and feature the 'set & forget' push button system for simple height adjustment at all pivot and hanger positions.

Note: Should this system be required without bottom guidance, please call for details as we can fulfill that requirement.



Main Hardware Components

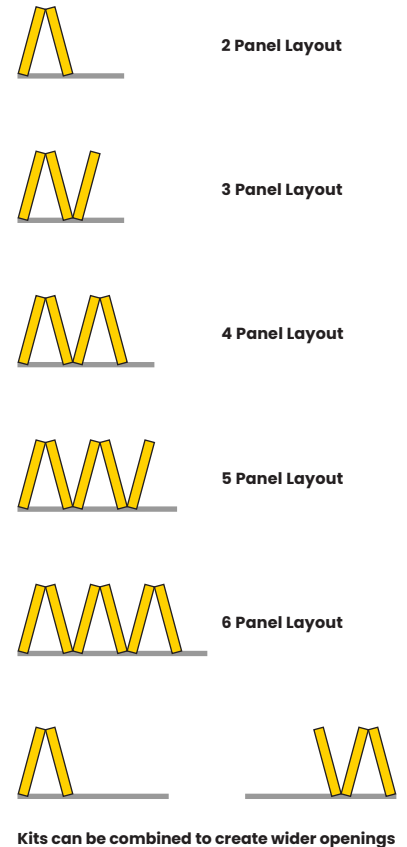


Middle Jamb Pivot Hinges required when doors are over 2200mm high. An additional hinge row required for doors over 2600mm high.

Available Finishes



Layouts



Maximum Weight (kg)
35

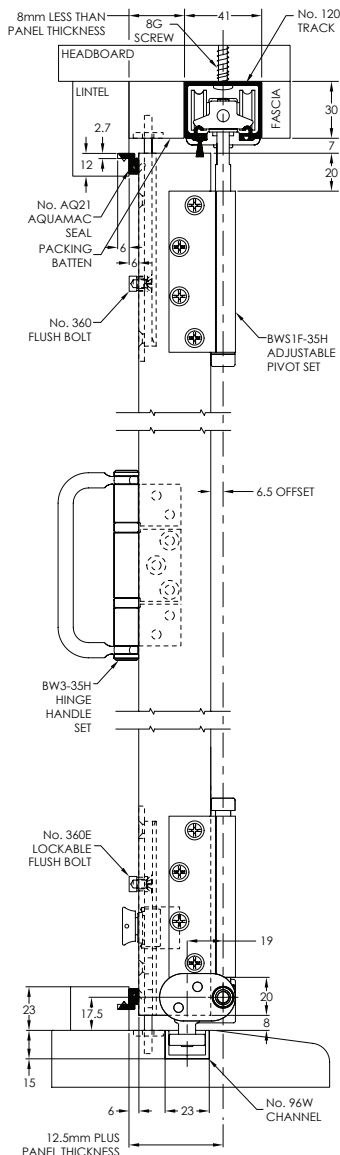
Maximum Width (mm)
1000

Maximum Height (mm)
1800

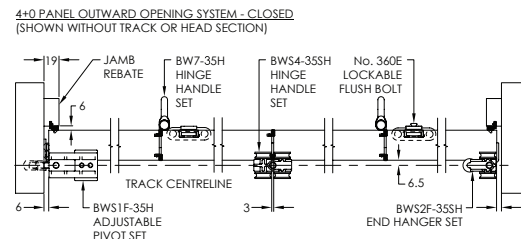
Panel Thickness (mm)
35+

Typical Layouts	Runs of I20 Top Track	Finish	Runs of 96W Guide Channel	BWSIF-35SH Pivot Set	BWS2R-35SH or BWS2L-35SH End Hanger Set	BWS4F-35SH Intermediate Hanger Set	BW3-35H or BW5-35H Hinge Sets	BW7-35H or BW6-35H Hinge Handle Sets	360 Flush Bolts Locking or Non-Locking	882 Magnetic Catch (882/65 Magnetic Catch For Swing Leaf)	401 Flush Pulls
2 Panels Folding	1	SS PS	1	1	1	0	1	0	2	1	2
3 Panels Folding	1		1	1	0	1	0	1	2	1 (1)	3
4 Panels Folding	1		1	1	1	1	0	2	4	3	4
5 Panels Folding	1		1	1		2	1	1	4	3 (1)	4
6 Panels Folding	1		1	1	1	2	1	2	6	5	5
Additional Notes	Available in lengths of 2000mm, 2500mm, 3000mm, 3500mm, 4000mm, 5000mm and 6000mm			Available in lengths of 2000mm, 2500mm, 3000mm, 3500mm, 4000mm, 5000mm and 6000mm	If you require a single leaf to oppose the above layouts, add 1no BWSIF-35SH	If you have 2no 2door layouts then allow for larger gap where centre doors meet		Based upon whether doors open to wards track or away from it	Based upon whether doors open to wards track or away from it	If you require a single leaf to oppose the above layouts, amend flush bolt numbers accordingly. Cranked bolts for inward folding and extended bolts are also available.	Standard 882 Magnetic catch use on doors without lever handles. 882/65 for use on swing leaves where lever handles are fitted.

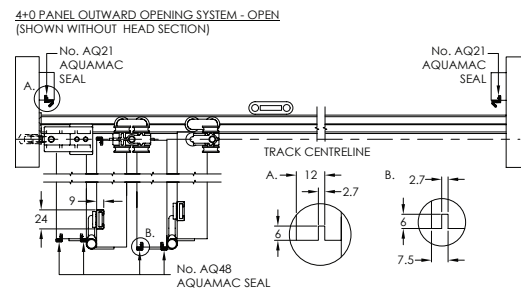
End Elevation



Plan Elevation Closed



Plan Elevation Open



Front Elevation

