



Weatherfold 50

Non Mortice Hinges

Weatherfold 50 is a top-hung folding system designed for external folding timber doors weighing up to 50kg per panel. Non-morticed hinges used as standard.

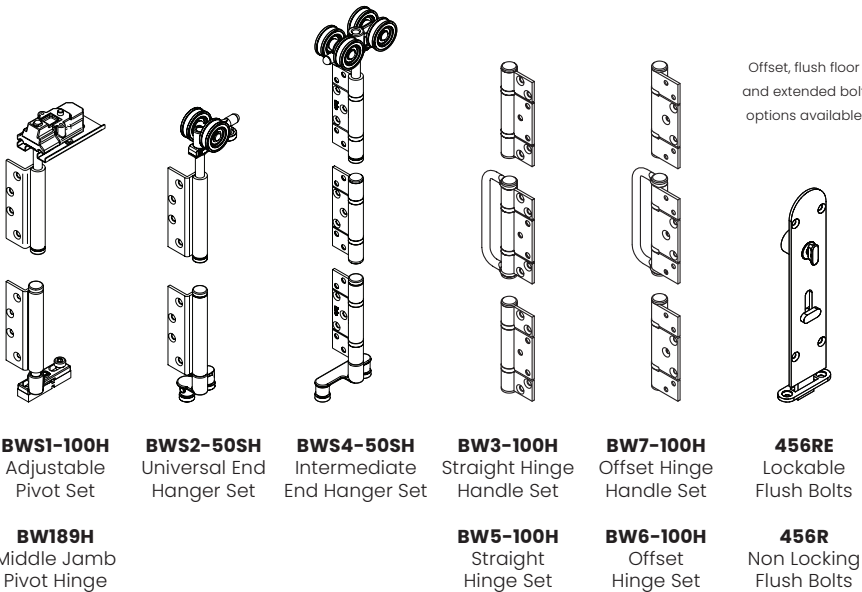
Capable of accommodating six equal size panels folding outwards to either side of the opening. Each panel can reach up to 1000mm wide and 3000mm high, and comfortably support a weight of up to 50kg.

316 marine grade stainless steel top hangers with precision stainless steel bearings and nylon wheels offer a smooth, quiet operation and patented 'set & forget' push button mechanism allows for easy installation and simple height adjustment.

Engineered for longevity and reliability, Weatherfold 50 has completed extensive corrosion resistance tests making it perfect for doors that demand exceptional corrosion resistance and weatherproofing.

Available in 4 high quality finishes, Weatherfold 50 will fit in to any decor seamlessly.

Main Hardware Components



Middle Jamb Pivot Hinges required when doors are over 2200mm high. An additional hinge row required for doors over 2600mm high.

Available Finishes



Layouts

To add single opposing swing leaf use
1 x BWS1-100H pivot set



2 Panel Layout



3 Panel Layout



4 Panel Layout



5 Panel Layout



6 Panel Layout



Kits can be combined to create wider openings

Maximum Weight (kg)
50

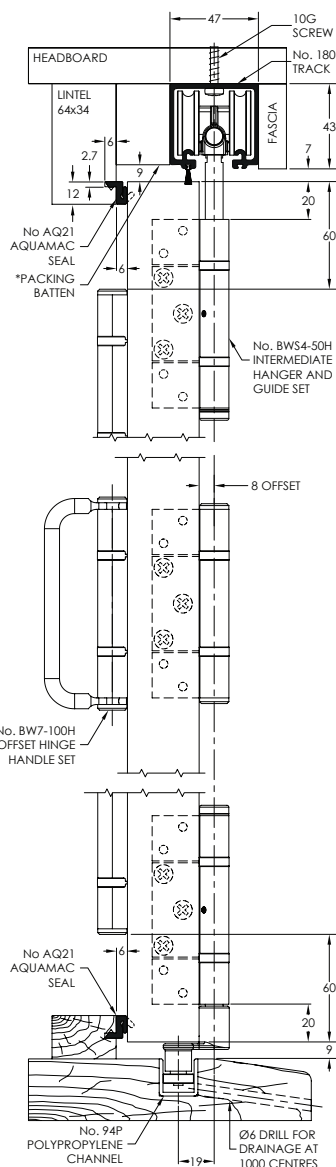
Maximum Width (mm)
1000

Maximum Height (mm)
3000

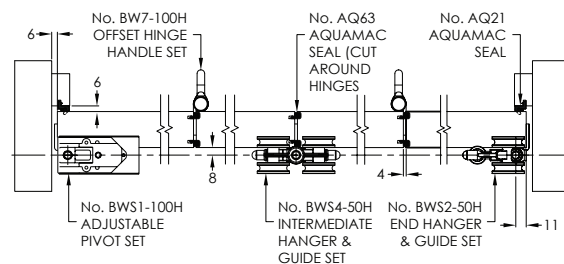
Panel Thickness (mm)
35+

Typical Layouts	Runs Of 180 Top Track	Finish	Runs of 94PPA Guide Channel	BWSIF-100SH Pivot Set	BWS2-50SH End Hanger Set	BWS4F-50SH Intermediate Hanger Set	BW3-100H or BW5-100H Hinge Sets	BW7-100H or BW6-100H Hinge Handle Sets	456R Flush Bolts Locking or Non-Locking	882 Magnetic Catch (882/65 Magnetic Catch For Swing Leaf)	401 Flush Pulls
2 Panels Folding	1	SS BLK PB PS	1	1	1	0	1	0	2	1	2
3 Panels Folding	1		1	1	0	1	0	1	2	1 (1)	3
4 Panels Folding	1		1	1	1	1	0	2	4	3	4
5 Panels Folding	1		1	1		2	1	1	4	3 (1)	4
6 Panels Folding	1		1	1	1	2	1	2	6	5	5
Additional Notes	Available in lengths of 2000mm, 2500mm, 3000mm, 3500mm, 4000mm, 5000mm and 6000mm		Available in lengths of 2000mm, 2500mm, 3000mm, 3500mm, 4000mm, 5000mm and 6000mm	If you require a single leaf to oppose the above layouts, add 1no. BWSIF-35SH	If you have 2no 2door layouts then allow for larger gap where centre doors meet		Based upon whether doors open to wards track or away from it	Based upon whether doors open to wards track or away from it	If you require a single leaf to oppose the above layouts, amend flush bolt numbers accordingly. Cranked bolts for inward folding and extended bolts are also available.	Standard 882 Magnetic catch use on doors without lever handles. 882/65 for use on swing leaves where lever handles are fitted.	Normally used with doors folding away from track in lieu of hinge handles. Reduce numbers if lever handles used

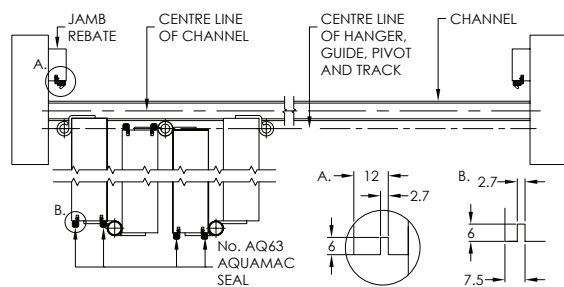
End Elevation



Plan Elevation Closed



Plan Elevation Open



Front Elevation

