



Weatherfold 100

Non Mortice Hinges

Weatherfold 100 is a heavy-duty top hung folding system specifically designed for external folding, non-morticed timber doors.

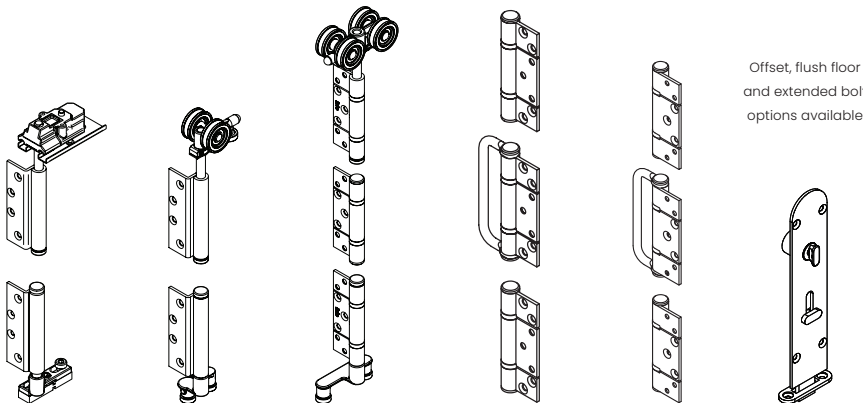
Capable of accommodating six equal size panels folding outwards to either side of the opening. Each panel can reach up to 1000mm wide and 3300mm high, and comfortably support a weight of up to 100kg.

316 marine grade stainless steel top hangers with precision stainless steel bearings and nylon wheels offer a smooth, quiet operation and patented 'set & forget' push button mechanism allows for easy installation and simple height adjustment.

Engineered for longevity and reliability, Weatherfold 100 has completed extensive corrosion resistance tests making it perfect for doors that demand exceptional corrosion resistance and weatherproofing.

Standard kits are available for popular sizes. For details see our Weatherfold 100 Kits Datasheet.

Main Hardware Components



BWS1-100H
Adjustable
Pivot Set

BWS2-100SH
Universal End
Hanger Set

BWS4-100SH
Intermediate
End Hanger Set

BW3-100H
Straight Hinge
Handle Set

BW7-100H
Offset Hinge
Handle Set

456RE
Lockable
Flush Bolts

BW189H
Middle Jamb
Pivot Hinge

BW5-100H
Straight
Hinge Set

BW6-100H
Offset
Hinge Set

456R
Non Locking
Flush Bolts

Middle Jamb Pivot Hinges required when doors are over 2200mm high. An additional hinge row required for doors over 2600mm high.

Offset, flush floor
and extended bolt
options available

Layouts

To add single opposing
swing leaf use
1no BWS1-100H pivot set



2 Panel Layout



3 Panel Layout



4 Panel Layout



5 Panel Layout



6 Panel Layout

Layouts can be combined to create wider openings



Available Finishes



Satin Stainless (SS)



Black (BLK)



Polished Brass (PB)



Polished Stainless (PS)

Maximum Weight (kg)
100

Maximum Width (mm)
1000

Maximum Height (mm)
3300

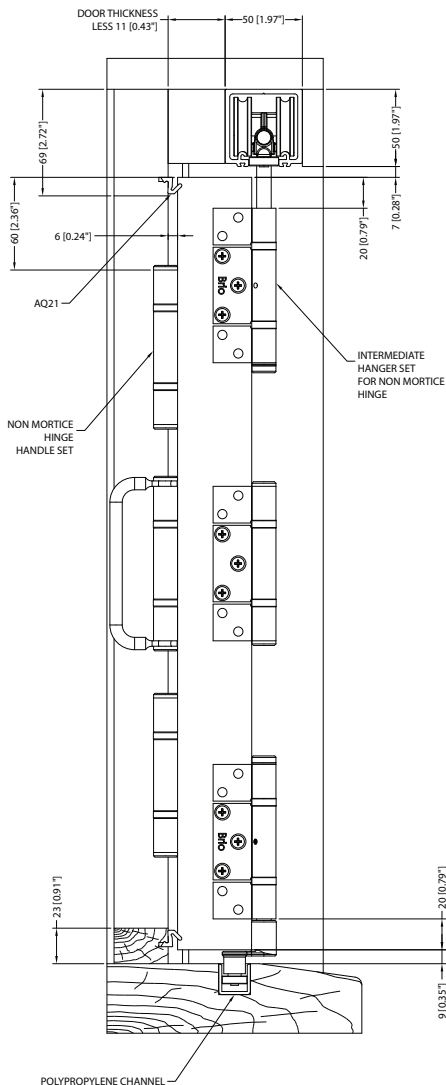
Panel Thickness (mm)
35+

Weatherfold 100

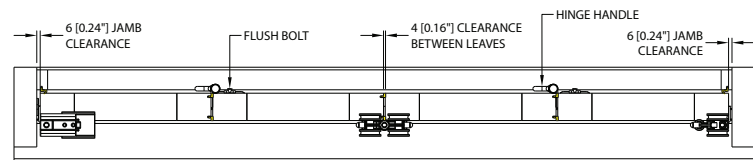
Non Mortice Hinges

Typical Layouts	Runs Of 250 Top Track	Finish	Runs of 94PPA Guide Channel	BWSIF-100SH Pivot Set	BWS2-100SH End Hanger Set	BWS4F-100SH Intermediate Hanger Set	BW3-100H or BW5-100H Hinge Sets	BW7-100H or BW6-100H Hinge Handle Sets	456R Flush Bolts Locking or Non-Locking	882 Magnetic Catch (882/65 Magnetic Catch For Swing Leaf)	401 Flush Pulls
2 Panels Folding	1	SS BLK PB PS	1	1	1	0	1	0	2	1	2
3 Panels Folding	1		1	1	0	1	0	1	2	1 (1)	3
4 Panels Folding	1		1	1	1	1	0	2	4	3	4
5 Panels Folding	1		1	1		2	1	1	4	3 (1)	4
6 Panels Folding	1		1	1	1	2	1	2	6	5	5
Additional Notes	Available in lengths of 2000mm, 2500mm, 3000mm, 3500mm, 4000mm, 5000mm and 6000mm		Available in lengths of 2000mm, 2500mm, 3000mm, 3500mm, 4000mm, 5000mm and 6000mm	*If you require a single leaf to oppose the above layouts, add 1no BWSIF-35SH*	If you have 2no 2door layouts then allow for larger gap where centre doors meet		*Based upon whether doors open to wards track or away from it*	*Based upon whether doors open to wards track or away from it*	If you require a single leaf to oppose the above layouts, amend flush bolt numbers accordingly. Cranked bolts for inward folding and extended bolts are also available.	Standard 882 Magnetic catch use on doors without lever handles. 882/65 for use on swing leaves where lever handles are fitted.	Normally used with doors folding away from track in lieu of hinge handles. Reduce numbers if lever handles used

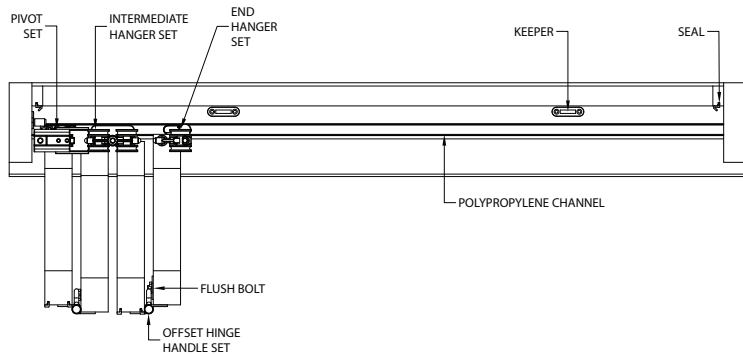
End Elevation



Plan Elevation Closed



Plan Elevation Open



Front Elevation

