



Single Run 350

Top Hung Sliding System

Single Run 350 is a premium sliding door system designed for heavy-duty applications in residential, commercial, and agricultural settings. Featuring an anodised aluminum top track and nylon grooved wheels equipped with sealed bearings, this system ensures exceptional reliability, quiet operation, and smooth functionality, accommodating a maximum door weight of 350kg.

A variety of bottom guidance options are available, including wall-mounted, floor-mounted, and specialised wall-mounted guides to fulfil diverse requirements. Most options are constructed from stainless steel, providing excellent corrosion resistance. For external doors, it is advisable to install two door-mounted guides that operate within a floor-mounted guide channel. This configuration enhances security and, when utilising rebated frames, improves weatherproofing. Interlocks are also offered.

Two hanger variants are available: a standard option designed to work optimally with a pelmet, and a zero-headroom option that permits a minimal 3mm gap between the top of the door and the bottom of the track, making it ideal for recessed track applications.

Main Components



1SS/250
Track Bracket



5SS/250
Double Track Bracket



180DS
Track Stop



250A
Top Track



94PPA
Bottom Guide Channel



924-CA48
Interlock

Common Door Layouts

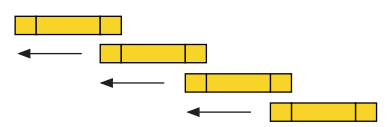
Single Panel Sliding behind Fixed



Double Panel Bi-Parting

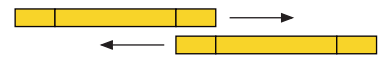


Multiple Telescopic Panels Sliding behind Fixed Panel



Typical Bi-passing Options

2 Doors Bi-Passing



3 Doors Bi-Passing



Top Hanger Options



57SS/HN
Standard Top
Fix Hanger



61SS/HN
Zero Clearance
Top Hanger

Bottom Guide Options



106RB/94
94 Guide
Roller



106A/94
Wall Mounted
Guide

Maximum Weight (kg)
350

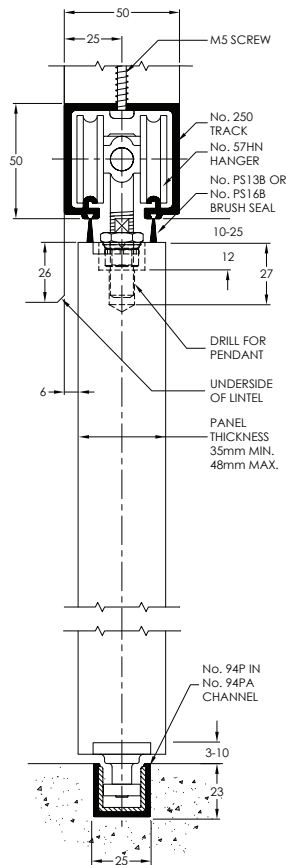
Maximum Width (mm)
2400

Maximum Height (mm)
3300

Panel Thickness (mm)
40+

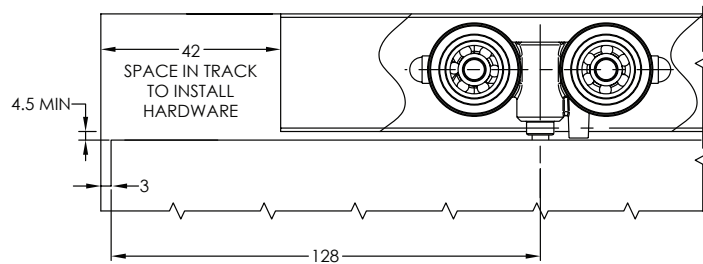
Typical Layouts	250A Runs Of Top Track	Top Hanger Selection		Bottom Guidance Selection		Optional Hardware can be adjusted based upon individual applications			
		57SS/HN Standard Hanger	661SS/HN Zero Clearance Hanger	106RB/94 Door Mounted Guides	94PPA Runs Of Bottom Guide Channel	924-CA48 Interlock	B4742.SS Door Stop	456R Flush Bolts Locking or Non-Locking	401 Flush Pulls
1 Door Sliding	1	2	2	2	1	1	1	1	2
2 Doors Bi-Parting	1	4	4	4	1	2	2	2	4
2 Doors Bi-Passing	2	4	4	4	2	0	0	2	2
3 Doors Bi-passing	2	6	6	6	2	0	0	3	4
2 Door Telescopic	2	4	4	4	2	2	2	2	3
3 Door Telescopic	3	6	6	6	3	3	3	3	4
Additional Notes	Available in lengths of 2000mm, 2500mm, 3000mm, 3500mm, 4000mm, 5000mm and 6000mm			2no Guide rollers place at each end of the door You will also require 94P guide channel to recess into the floor for the whole width of the opening	Available in lengths of 1000mm, 2000mm, 2500mm, 3000mm, 3500mm, 4000mm, 5000mm and 6000mm	Used to seal gaps between doors and frames. Also used on Telescopic doors to collect panels when closing.	Required to both stop the door and for telescopic panels to catch the doors when opening.		

Standard Hanger End Elevation



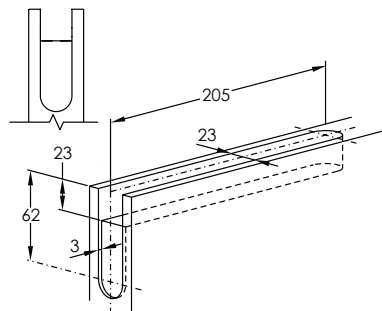
Zero Clearance Hanger Details

TRACK FIXING CENTRES
35mm FROM EACH END, THEN FIX AT 400mm INTERVALS

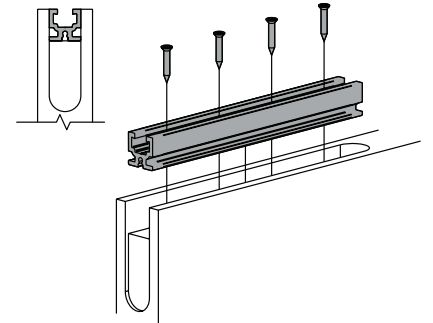


PANEL PREPARATION AND INSTALLATION

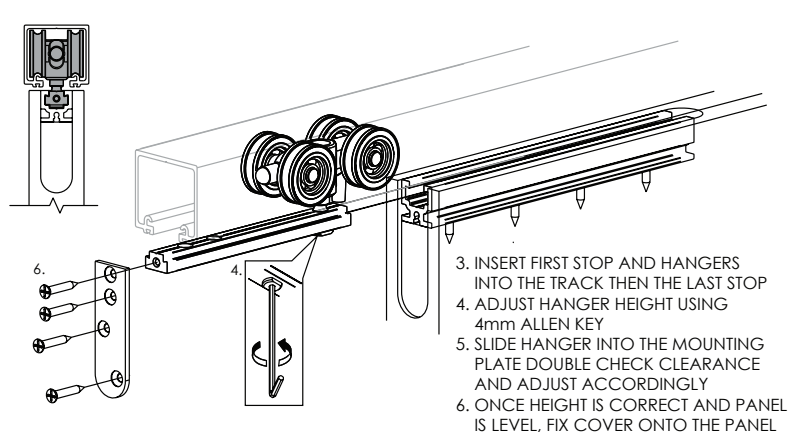
1. PREPARE PANEL FOR MOUNTING PLATE.



2. FIT MOUNTING PLATE WITH SCREWS SUPPLIED



ASSEMBLY



Alternative Guide Layout

