



Interfold 35F Kits

Non Mortice Hinges

Interfold 35F is a stainless steel based, top hung folding system specifically designed for interior timber doors without a floor mounted guide channel. Capable of supporting doors of equal width up to 35kg, this innovative hardware system is available in 2 colour options to blend seamlessly with any décor.

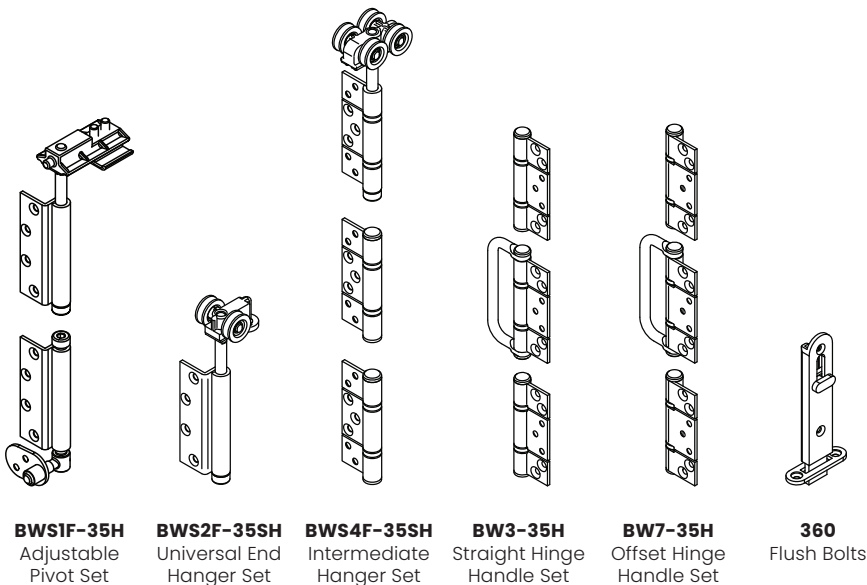
Crafted from high-grade 304 stainless steel, the non-mortice hinges offers exceptional strength, corrosion resistance, and a sleek aesthetic.

Top hangers comprise sealed bearings for durability, grooved nylon wheels for a smooth, quiet operation, and feature the 'set & forget' push button system for simple height adjustment at all pivot and hanger positions.

Available as simple to use kits, Interfold 35F offers clean lines and simple styling making it the ideal choice for room dividers and similar.

Note: For systems requiring taller panels or inward folding layouts then please call for further details.

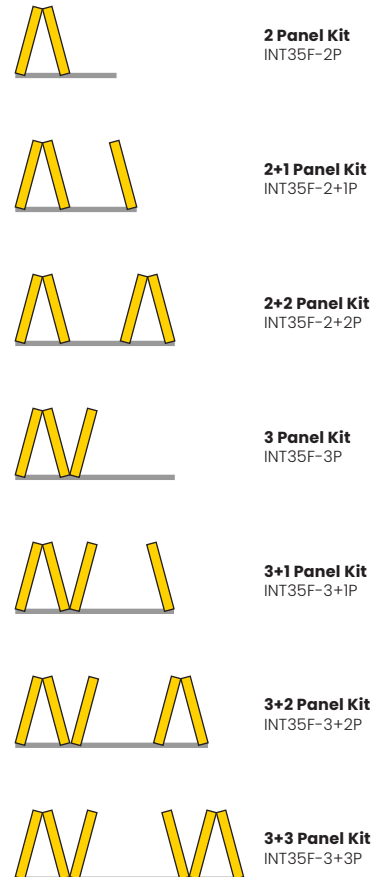
Main Hardware Components



Available Finishes



Kit Layouts & Codes



Maximum Weight (kg)
35

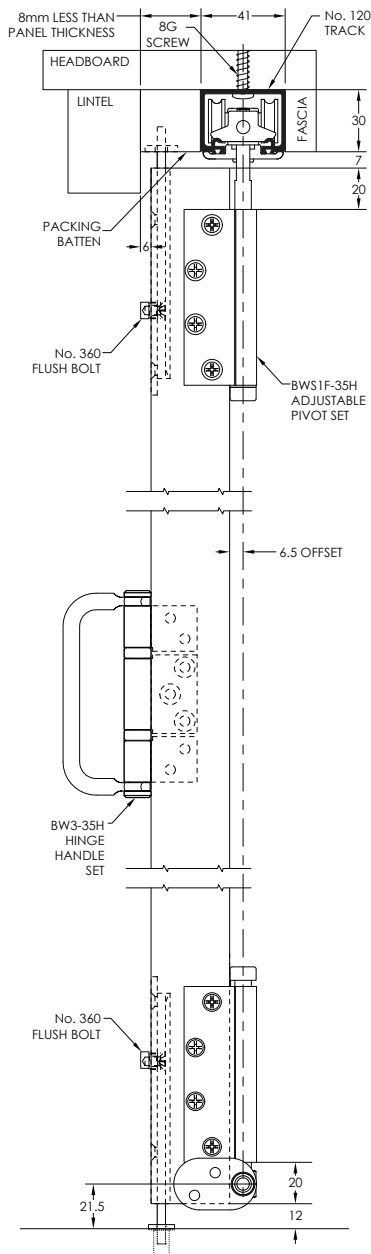
Maximum Width (mm)
762

Maximum Height (mm)
2200

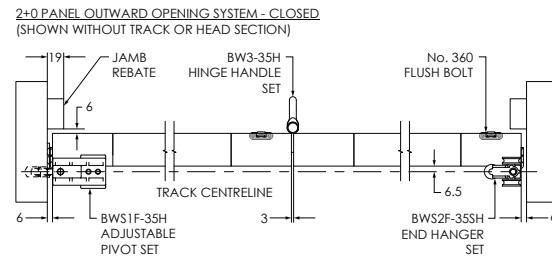
Panel Thickness (mm)
35-44

Product Description	Track Length	Finish	BWS1F-35H Adjustable Pivot Set	BWS2F-35SH Universal End Hanger Set	BWS4F-35SH Intermediate Hanger Set	BW7-35H Offset Hinge Handle Set	BW3-35H Straight Hinge Handle Set	360 Flush Bolts
INT35F-2P	2500mm x 1	SS PS	1	1	0	0	1	2
INT35F-2+1P	2500mm x 1		2	1	0	0	1	2
INT35F-2+2P	3500mm x 1		2	2	0	0	2	4
INT35F-3P	2500mm x 1		1	0	1	1	0	3
INT35F-3+1P	3500mm x 1		2	0	1	1	0	5
INT35F-3+2P	2000mm x 2		2	1	1	1	1	5
INT35F-3+3P	2500mm x 2		2	0	2	2	0	8

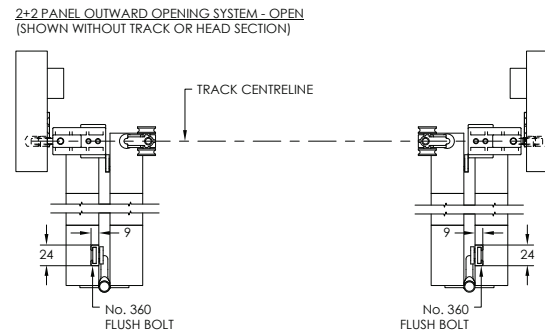
End Elevation



Plan Elevation Closed



Plan Elevation Open



Front Elevation

