



Interfold 35F Non Mortice Hinges

Interfold 35F is a stainless steel based, top hung folding system specifically designed for interior timber doors without a floor mounted guide channel. Capable of supporting doors of equal width up to 35kg, this innovative hardware system is available in 2 colour options to blend seamlessly with any décor.

Crafted from high-grade 304 stainless steel, the non-mortice hinges offers exceptional strength, corrosion resistance, and a sleek aesthetic.

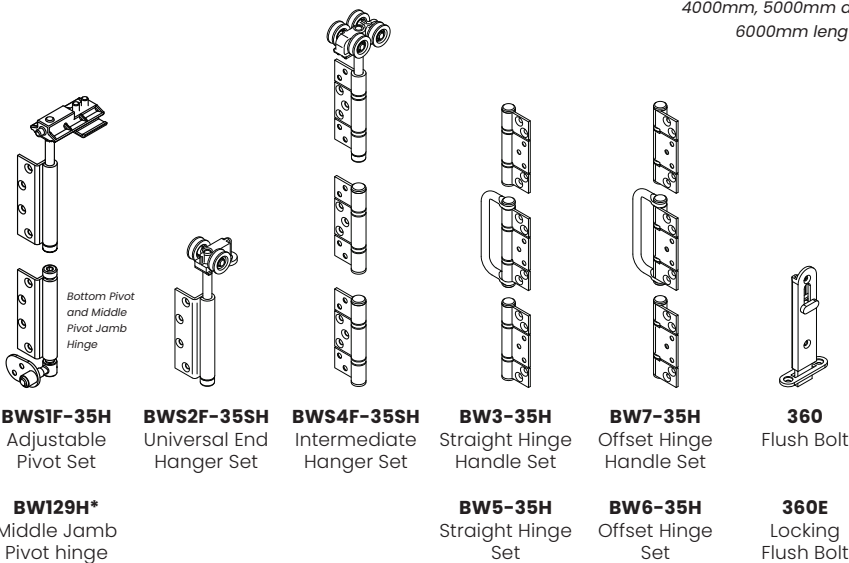
Top hangers comprise sealed bearings for durability, grooved nylon wheels for a smooth, quiet operation, and feature the 'set & forget' push button system for simple height adjustment at all pivot and hanger positions.

Standard kits are available for the most common sizes and layouts, please see our specific Interfold 35F Kit Datasheet for further details.

Note: Bottom guidance is available for this system. If required, please call for details.

Main Hardware Components

120 Top track available in 2000mm, 2500mm, 3000mm, 3500mm, 4000mm, 5000mm and 6000mm lengths



* BW129H Required in addition to Pivot set when doors are over 2200mm

Available Finishes



Layouts

To add single opposing swing leaf use 1no BWS1F-35H pivot set.



2 Door Layout



3 Door Layout



4 Door Layout (Maximum)



Layouts can be combined to create wider openings.

Maximum Weight (kg)
35

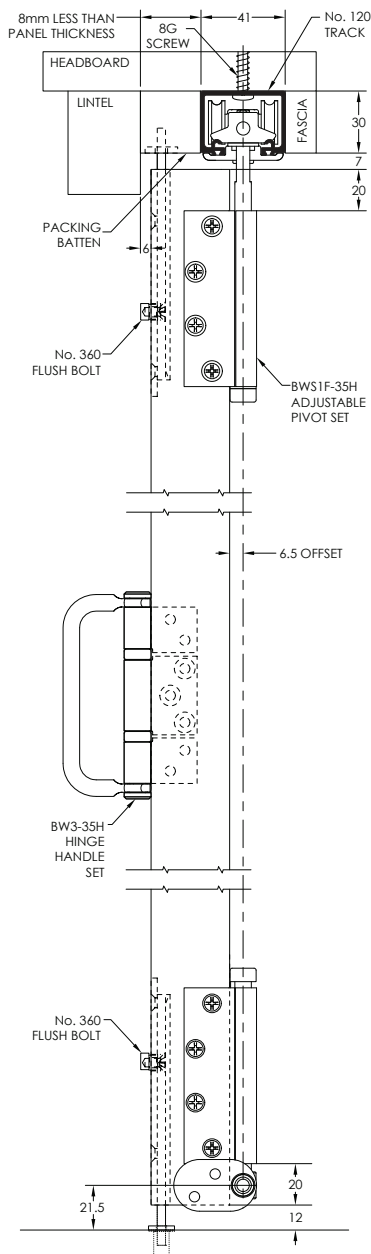
Maximum Width (mm)
820

Maximum Height (mm)
2600

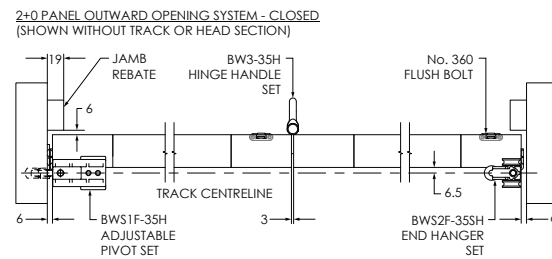
Panel Thickness (mm)
35-44

Door Layout	Runs of 120 Top Track	Finish	BWS1F-35SH Adjustable Pivot Set	BWS2F-35SH Universal End Hanger Set	BWS4F-35SH Intermediate Hanger Set	BW7-35H OR BW6-35H Offset Hinge Hanger Set	BW3-35H OR BW5-35H Straight Hinge Hanger Set	360 Flush Bolts Locking or Non-Locking	401 Flush Pulls
2 Panel Folding	1	SS	1	1	0	0	1	2	2
3 Panel Folding	1		1	0	1	1	0	3	3
4 Panel Folding	1		1	1	1	2	0	4	4
Additional Notes	Available in lengths of 2000mm, 2500mm, 3000mm, 3500mm, 4000mm, 5000mm and 6000mm	PS	If you require a single leaf to oppose the above layouts, add 1no BWS1F-35SH	If you have 2no 2 door layouts then allow for larger gap where centre doors meet		Based upon whether doors open towards track or away from it	Based upon whether doors open towards track or away from it	If you require a single leaf to oppose the above layouts, amend flush bolt numbers accordingly	Normally used with doors folding away from track in lieu of hinge handles. Reduce numbers if lever handles used

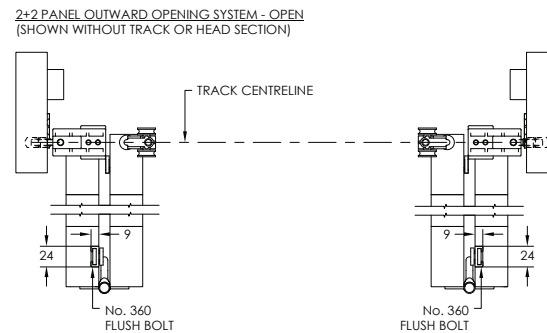
End Elevation



Plan Elevation Closed



Plan Elevation Open



Front Elevation

