



Brio Flushbolt Range

For Sliding & Folding Doors

Brio offers an extensive selection of flush bolts that are compatible with all our folding and sliding door systems.

The 360 range is designed for window and internal folding door systems, as well as smaller sliding doors. It includes options for both non-locking and locking variants and is offered in satin or polished stainless finishes, with lengths of 190mm and 300mm available.

The 456R range represents our premium bolt, utilised in the Weatherfold 100 and Interfold 50F systems, as well as for large sliding doors. A wide variety of finishes are available including satin or polished stainless steel, polished brass and black. Lengths of 190mm, 450mm, and 600mm are offered.

For doors exceeding 2500 mm, we recommend our 286 Dual Point Locking system, which provides a single-handle operation for doors measuring up to 3500 mm.

Additionally, these products are backed by our comprehensive 10-year warranty.



360 Flush Bolt Range

Code	Description	Finish
360	Straight Non Locking 110mm	SS - Satin Stainless PS - Polished Stainless
360E	Straight Locking 110mm	
360N	Offset Non Locking 110mm	
360L	Straight Non Locking 300mm	

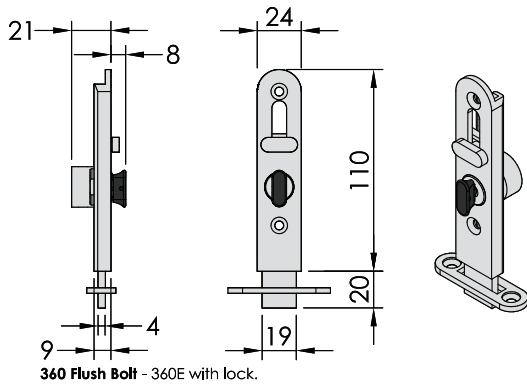


456R Flush Bolt Range

Code	Description	Finish
456R	Straight Non Locking 190mm	SS - Satin Stainless PS - Polished Stainless PB - Polished Brass BLK - Black
456RE	Straight Locking 190mm	
456RN	Offset Non Locking 190mm	
456REN	Offset Locking 190mm	
456RI	Flush Floor Non Locking 190mm	
456REI	Flush Floor Locking 190mm	
456RL	Straight Non Locking 450mm	
456RLE	Straight Locking 450mm	
456RLN	Offset Non Locking 450mm	
456RLX	Straight Non Locking 600mm	
456RLNX	Offset Non Locking 600mm	



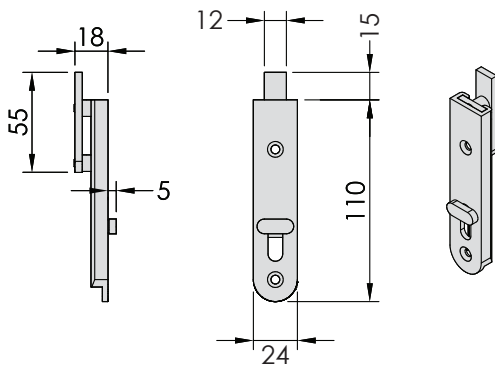
360 Straight Bolt Details



360 Flush Bolt - 360E with lock.

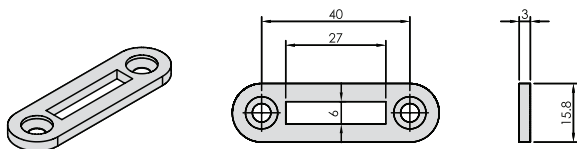
Available in 110mm and 300mm lengths.
(300mm available in non locking only)

360N Offset Bolt Details



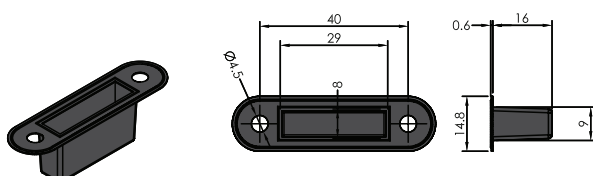
360N Flush Bolt - for inward opening windows (fitted to the top of the sash)

456RK Keeper Plate Details

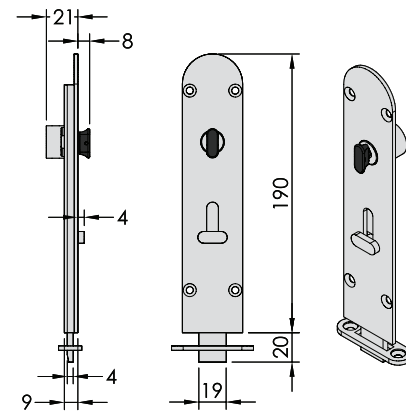


If required, the 456RKL extended keep with a 40mm slot and 54mm hole centres is available complete with extended dust box

456DB Dust Box Details

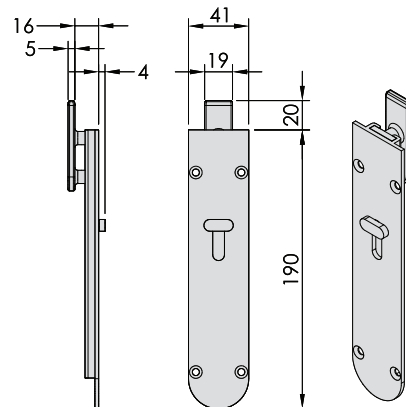


456R Straight Bolt Details



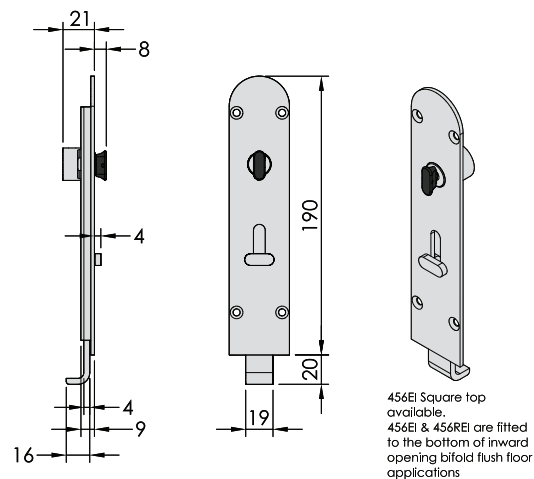
Available in 190mm 450mm and 600mm lengths
(No 600mm locking options available)

456RN Offset Bolt Details



Available in 190mm 450mm and 600mm lengths
(No 600mm locking options available)

456RI Flush Floor Bolt Details



Available in 190mm lengths only