

This Guide to Quantities is only applicable to Data Sheets D120.

Specifications and Quantities

The specifications below and overleaf detail the maximum and minimum capacities for the track systems recommended. Panels are hinged together to form either one or two units of up to eight panels each, with each unit pivoted to one side of the opening. Openings can be covered by units of four, six or eight 'floating' panels. Floating systems must include a guide.

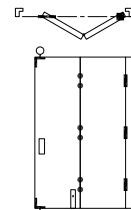
If the panel weight is unknown, the weight can be calculated using the chart in Section 'A'. Having calculated the weight, use the information below to select the appropriate track system and quantities for the unit or units required to cover the opening width.

Specification for Individual Panels

Track System	Endfold 75
Refer to Data Sheet	D120
Max Panel Height	3300mm
Max Panel Weight	75kg
Max Panel Width	900mm
Min Panel Thickness	40mm
Max Number of Panels	8 each direction

2 Panel Unit Hinged to Post

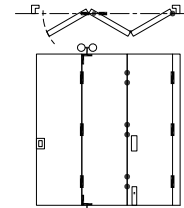
	Quantities	Product Codes
Track	See data sheet D75C	250
Bracket (face fix)	See data sheet D75C	1SS/250
Hanger	1	21HN
Hinges	6*	404/3
Guide (optional)	1	21RB/94
Channel (optional)	See data sheet D75C	94A, 94B, 94P & 94PA
Flush Pulls	2	401
Flush Bolt	1	456



*For Panels exceeding 3000mm high, increase to 8

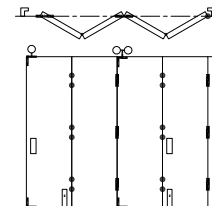
3 Panel Unit Hinged to Post Inc. Access Door

	Quantities	Product Codes
Track	See data sheet D75C	250
Brackets, (face fix)	See data sheet D75C	1SS/250
Hanger	1	21/4HN
Hinges	9	404/3
Guide	1	21RB/94
Channel	See data sheet D75C	94A, 94B, 94P & 94PA
Flush Pull	1	401
Flush Bolt	1	456



4 Panel Unit Hinged to Post

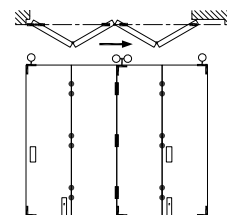
	Quantities	Product Codes
Track	See data sheet D75C	250
Bracket (face fix)	See data sheet D75C	1SS/250
Hanger	1	21HN
Hanger	1	21/4HN
Hinges	12*	404/3
Guides	2	21RB/94
Channel	See data sheet D75C	94A, 94B, 94P & 94PA
Flush Pulls	3	401
Flush Bolts	2	456



*For Panels exceeding 3000mm high, increase to 16

4 Panel 'Floating' Unit

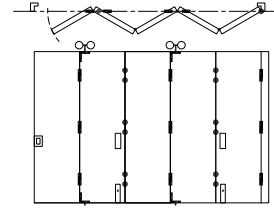
	Quantities	Product Codes
Track	See data sheet D75C	250
Bracket (face fix)	See data sheet D75C	1SS/250
Hangers	2	21HN
Hanger	1	21/4HN
Hinges	9*	404/3
Guides	3	21RB/94
Channel	See data sheet D75C	94A, 94B, 94P & 94PA
Flush Pulls	3	401
Flush Bolts	2	456



*For Panels exceeding 3000mm high, increase to 12

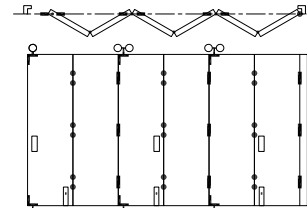
5 Panel Unit Hinged to Post Inc. Access Door

	Quantities	Product Codes
Track	See data sheet D75C	250
Bracket (face fix)	See data sheet D75C	1SS/250
Hanger	2	21/4HN
Hinges	15	404/3
Guides	2	21RB/94
Channel	See data sheet D75C	94A, 94B, 94P & 94PA
Flush Pulls	2	401
Flush Bolts	2	456



6 Panel Unit Pivoted to one side

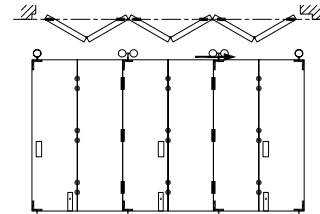
	Quantities	Product Codes
Track	See data sheet D75C	250
Bracket (face fix)	See data sheet D75C	1SS/250
Hanger	1	21HN
Hangers	2	21/4HN
Hinges	18*	404/3
Guides	3	21RB/94
Channel	See data sheet D75C	94A, 94B, 94P & 94PA
Flush Pulls	4	401
Flush Bolts	3	456



*For Panels exceeding 3000mm high, increase to 24

6 Panel 'Floating' Unit

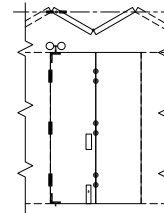
	Quantities	Product Codes
Track	See data sheet D75C	250
Bracket (face fix)	See data sheet D75C	1SS/250
Hangers	2	21HN
Hangers	2	21/4HN
Hinges	15*	404/3
Guides	4	21RB/94
Channel	See data sheet D75C	94A, 94B, 94P & 94PA
Flush Pulls	4	401
Flush Bolts	3	456



*For Panels exceeding 3000mm high, increase to 20

2 Additional Panels to Increase 5 or 6 Panel Units to 7 or 8 Panel Units

	Quantities	Product Codes
Hanger	1	21/4HN
Hinges	6*	404/3
Guide	1	21RB/94
Flush Pull	1	401
Flush Bolt	1	456



*For Panels exceeding 3000mm high, increase to 8

Application

Suitable for residential or commercial end folding partitions.

Panels can fold to one or both sides of the opening and can be stacked behind a reveal if required.

To cover any width of opening, any number of folding units can be used.

Panel Specification

Track System:	Endfold 75
For Individual Panels:	
Max Panel Height	3300mm
Max Panel Weight	75kg
Max Panel Width	900mm
Min Panel Thickness	40mm

Folding units of up to eight panels can be hinged to a post.

A unit with an odd number of panels provides a hinged access door.

A guide system across the floor must be used on units of three panels or more. Floating units consist of four, six or eight panels.

Panels should be constructed to provide secure fitting for the hangers, hinges and guides and can be flush, panelled or glazed.

Hardware Specification

Track:	250
Material	Aluminium, Mill or Clear Anodised
Standard Lengths	2000mm, 3000mm, 4000mm & 6000mm

Bracket (Face Fix):	
Bracket 316 Stainless Steel	1SS/250
Brackets located close together at the pivot end of the track with other brackets at 400mm centres.	

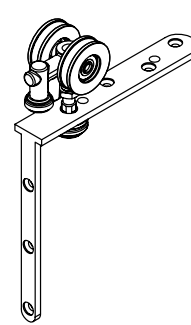
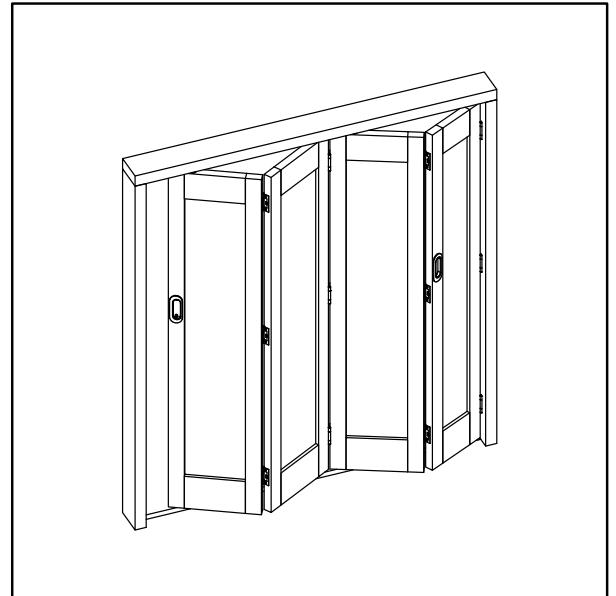
Hangers:	
End panels	21HN
Intermediate Panels	21/4HN
Hangers are fitted with nylon tyre wheels on ball race bearings. Vertical adjustment is simple and positive.	

Guide:	
With precision bearing	21RB/94
All steel parts to hangers and guides are stainless steel	

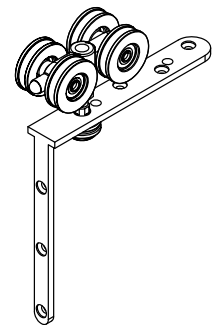
Hinges:	
Butt hinge	404/2S
Stainless steel hinge, 76x63mm	
Butt hinge	404/3S
Stainless steel hinge, 101x76mm	

Channels:	
Aluminium	94A
Polypropylene & Aluminium	94PPA
Finish	Mill or clear anodised
Brass	94B
Standard Lengths	2000mm, 3000mm, 4000mm and 6000mm

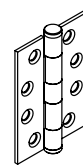
Accessories:	
Flush Pulls	401
Flush Bolts	456
Flush bolts and flush pulls are available in (PVDB) PVD Brass, (SN) Satin Nickel & (PN) Polished Nickel	



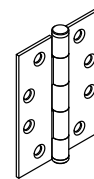
No. 21HN
HANGER



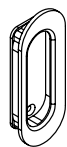
No. 21/4HN
HANGER



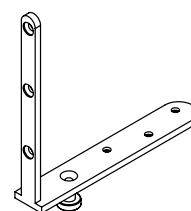
No. 404/2
BUTT HINGE



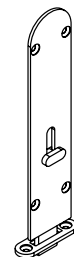
No. 404/3
BUTT HINGE



No. 401
FLUSH PULL



No. 21RB/94
GUIDE



No. 456R
FLUSH BOLT

